

# TECHNICAL DATA SHEET

## FSM336-100WS



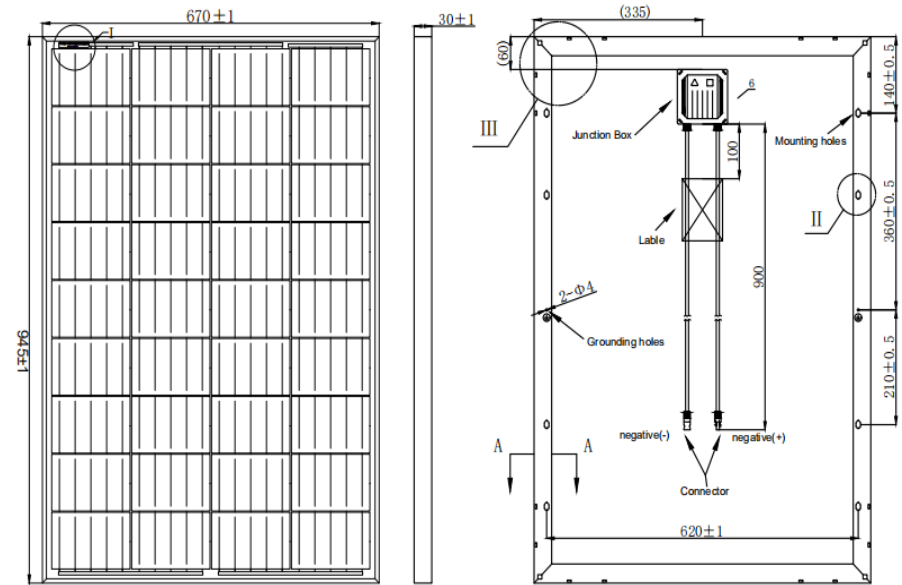
### Technical Data

Type	FSM336-100WS
Type of Solar Cell	Mono-crystalline, PERC
Number of Cells	36pcs
Size of module	945*670*30mm
Module, Weight	6.7 kg
Connector / Cross-Section	Junction Box
Cables, Length (+/-)	Customizable
Front Cover Glass	Safety Glass
Front Cover Glass, Thickness	3.2 mm
Frame	Anodized Aluminium

### Electrical Data

Maximum Power	$P_{MPP\ STC}$	100W
Power Tolerance	$\Delta_{STC}$	+ 3%
Maximum Power Voltage	$U_{MPP\ STC}$	18.5V
Maximum Power Current	$I_{MPP\ STC}$	5.45A
Open Circuit Voltage	$U_{OC\ STC}$	22.0V
Short Circuit Current	$I_{SC\ STC}$	5.94A
Module Efficiency	$\eta_{STC}$	17.7%
Maximum System Voltage	$U_{DC}$	1000 V

STC: Irradiance 1000 W/m<sup>2</sup>; Spectrum AM 1.5; Cell Temperature 25°C, Wind 0 m/s



Voltage Coefficient	$\beta_k (U_{oc})$	$-0.35 \pm 0.01\%/K$
Current Coefficient	$\Phi_k (I_{sc})$	$0.065 \pm 0.015\%/K$

### Power Warranty

- 10 years performance warranty to 90%
- 25 years performance warranty to 80%
- 5 years warranty against production and material defects

### Certifications

IEC 61215, IEC 61730, TUV, CE, ISO9001:2000

